



# MIST AP SUSPENDED CEILING TILE ENCLOSURE MOUNT (AP 41 STYLE)



The AccelTex Solutions Mist AP suspended ceiling tile enclosure mount secures and protects a Mist AP 41 series AP within a ceiling tile grid. This enclosure mount fits in a standard 2'x2' suspended ceiling tile grid opening and is the most convenient and secure method for AP mounting in a suspended ceiling environment.

Part Number: ATS-CT-MIST1-2X2



## FEATURES

- Door is easily removed and can be installed to open in any direction with our innovative spring hinge system
- AP installs using the included ceiling tile grid clip shipped with the AP onto an integrated mounting plate with no tools
- Key lock for security
- Includes integrated tabs for securing enclosure mount to permanent building structure
- Shallow back box (1.5") allows installation into the tightest ceiling clearances



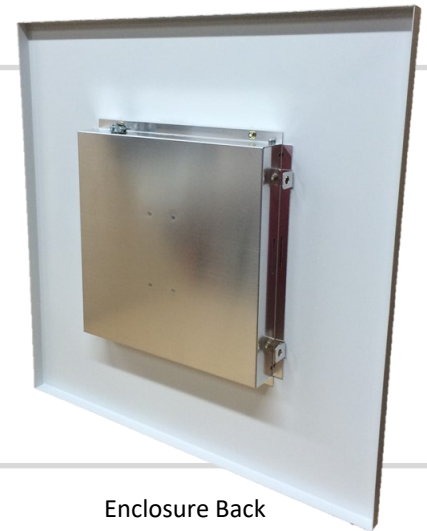
## BENEFITS

- Easy to Install
- No ceiling tile grid modification necessary (if mounting into a 2'x2' grid)
- Service the AP without removing the enclosure mount from ceiling
- Lightweight aluminum design reduces ceiling strain and load
- Simple, one person installation
- Blends seamlessly into ceiling
- No tools required for installation



## MOUNT SHIPS WITH

- 2x2 Suspended Ceiling Tile Enclosure Mount with installed Mist 1 Door
- Cord Grip
- Key



Enclosure Back



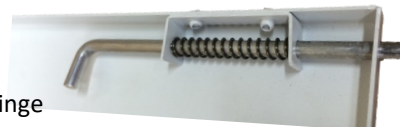
Integrated mounting tabs on two sides

Key Lock



Integrated Mounting Plate, Cord Grip and Repositionable Door

Spring Hinge



# MIST AP SUSPENDED CEILING TILE ENCLOSURE MOUNT (AP 41 STYLE)

Part Number: ATS-CT-MIST1-2X2



## MECHANICAL SPECIFICATIONS

---

Dimensions: 23.75" x 23.75" x 1.5" (603.25mm x 603.25mm x 38.1mm)  
Weight (without AP): 3.75 lb (1.70 kg)  
Material: Aluminum  
Color: White  
Lock: Key Lock  
Installation: Suspended Ceiling (includes tabs for securing to building structure)  
Equipment Installation: AP Mounting Feet onto Included Mounting Bracket



## ENVIRONMENTAL SPECIFICATIONS

---

Installation Environment: Indoor

## STANDARDS, TESTING AND CERTIFICATIONS

---

Designed to meet NEC300-22 and 300-23 to mount the Mist AP in plenum/air handling areas



## WARRANTY

---

2 Year Limited Warranty